



MECOR L. AMERICA 2010



Hello from Bogotá!



MECOR L. America 2010-- Our Hosts



Ivan Solarte, MD
Pontificia Universidad Javeriana

MECOR



Carlos Torres, MD
**Fundación Neumológica
Colombiana**

MECOR L. America 2010-- Our Director

A. Sonia Buist, MD
Oregon Health Sciences
University
Director, ATS MECOR Program



MECOR L. America 2010 Introductions



MECOR L. America 2010

Our Students—Level 1



MECOR L. America 2010 Our Students—Level 1



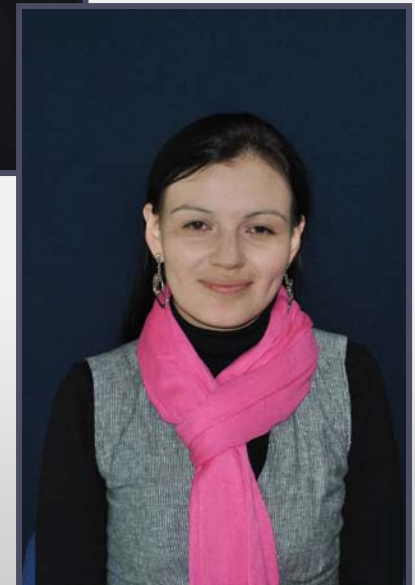
MECOR L. America 2010

Our Students—Level 1



MECOR L. America 2010

Our Students--Level 1



MECOR L. America 2010

Our Students—Level 1

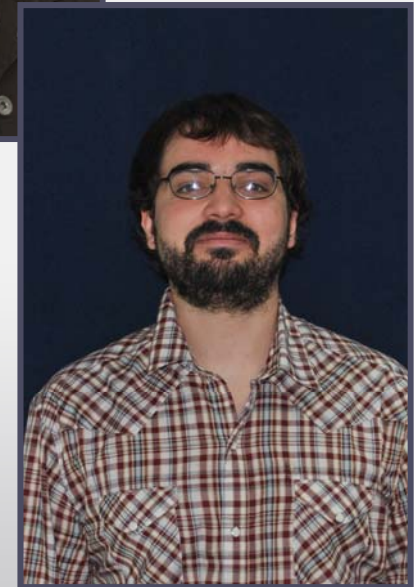


MECOR L. America 2010

Our Students—Level 1



MECOR L. America 2010 Our Students—Level 2



MECOR L. America 2010

Our Students—Level 2



MECOR L. America 2010

Our Students—Level 3



MECOR L. America 2010

Our Students—Level 3



MECOR L. America 2010

Our Students—Level 3



MECOR L. America 2010

Our Students—Level 4



MECOR L. America 2010

Our Students—Level 4



MECOR L. America 2010 Our Faculty and Staff



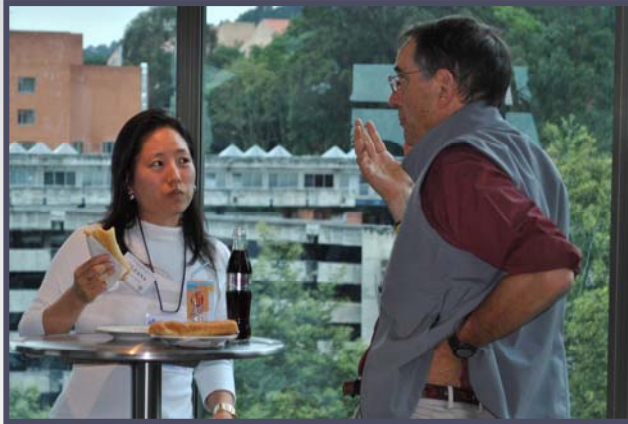
MECOR L. America Hard at Work

Our “conversations” in classrooms & hallways



MECOR L. America Hard at Work

Our “conversations” in classrooms & hallways



MECOR L. America Hard at Work

Small Groups



MECOR L. America Hard at Work Small Groups



MECOR L. America

What is the Question– Level 1

- Is the household exposure to cats/dogs during early childhood associated with increased asthma development in school aged children in Guayaquil and Bogota Columbia?
- What is the prevalence and risk factors in adults for developing MDR TB in three reference centers for TB in Guayaquil, Bogota, and Buenos Aires?
- What is the prevalence of different treatments in patients with malignant pleural effusion?

MECOR L. America

What is the Question– Level 1

- Do patients enrolled in a standardized, formal COPD management program have different quality of life compared with patients in an informal, non-standardized program?
- Does rotation shift work affect ICU nurses' amount and quality of sleep?
- What is the prevalence and risk factors for sepsis in 14 Brazilian pediatric ICUs?

MECOR L. America

What is the Question– Level 2

- Does spiritual support alter the quality of life of patients with COPD?
- Home non-invasive ventilation in stable end-stage COPD: a retrospective cohort study.
- Is frailty in the elderly associated with mortality?
- Is Tobramycin better than Colistin plus oral cipro to eradicate *Pseudomonas Aeruginosa* in Cystic Fibrosis patients?

MECOR L. America

What is the Question– Level 2

- Do statins prevent atrial fibrillation after cardiac surgery?
- What are the risk factors for discontinuation of second line TB drugs?
- Is the COPD questionnaire as accurate to diagnose COPD as spirometry plus questionnaire in pulmonary outpatients >60 years?

MECOR L. America

What is the Question– Level 3

- What is the impact of two different exercise programs in symptom free days, pulmonary function, and quality of life in patients with moderate asthma?
- What is the impact of 2 two strategies of physical therapy during the post-op period on pulmonary function and 6 minute walk test for patients submitted for kidney transplant?
- What is the knowledge and attitude about TB treatment guidelines among primary care physicians and medical students in Ecuador?
- What is the correlation between tissue derived PDGF and serum PDGF in patients with pulmonary embolism and chronic pulmonary hypertension with acute pulmonary embolism?

MECOR L. America

What is the Question– Level 3

- What is the sensitivity and specificity of brain BNP to predict pulmonary hypertension in patients with pulmonary embolism?
- What is the rate of positivity of several latency antigens for TB between patients at different stages of infection with TB and controls?
- What is the difference in flow oriented and volume oriented incentive spirometry during the post-op period in patients who have undergone upper abdominal surgery?
- What is the impact of upper abdominal surgery on thoraco-abdominal mechanics measured with opto-electric plethsmography?

MECOR L. America

What is the Question– Level 4

- What is the phenotype of 1,101 individuals with insomnia in Sao Paulo, Brazil?
- What are the patterns of microstructure of sleep EEG and their impact on quality of sleep in an epidemiologic sample in Sao Paulo, Brazil?
- What is the validation of two scores to predict asthma in pre-school children with recurring wheezing?
- What are the risk factors for organ failure and mortality in children with ARDS?

MECOR L. America

What is the Question– Level 4

- What is the quantitative characterization of sublingual microcirculation in healthy subjects?
- What is the pre-operative assessment for lung resection in candidates with possible lung cancer in a tertiary hospital in Sao Paulo, Brazil?

MECOR L. America Our Celebration!



MECOR L. America Faculty

Start spreadin' the news
We're teaching today
We are the epi faculty of
MECOR MECOR

Confounding and bias
Can get in the way
We'll show you how to randomize
MECOR MECOR

I wanna wake up in a world
Where grants grow on trees
And find a significant "P"
That's what I need

This protocol sucks
Sample size is too big
I'll make a brand new start of it
Here at MECOR

If I can make it here
I'll make it anywhere
It's up to you
MECOR MECOR

These sample size blues
Are melting away
I've learned to cull my database
In old MECOR

And if I can make it there
I'm going to make it any where
Brazil, Argentina, Chile, Columbia, Peru
And Ecuador!
MECOR MECOR!

MECOR L. America Our Celebration!



**Damon Scales &
Niall Ferguson**

Hello my friends, my name is Damon
Now I'm a level 2 faculty again
Which means I'm no longer a "MECOR Virgin"
This time we've come to Columbia
To a place called Boga toga toga toga ta.

I can hardly believe the ground we've covered
This course is exhausting, I've re-discovered
All day long putting students through their paces
Then it's off to the bar for refreshing cervezas

Restriction, matching
Adjusting with regression
Specification, blinding,
And patient selection
These are the topics that win our affection
And keep us coming back for more MECOR

Boga toga toga toga toga toga ta!
Where we've come to teach MECOR
In the heart of Colombia!
It's been awesome being here
with - all of ya!
In Boga toga toga toga ta! Boo ya!

MECOR L. America Our Celebration!



“Senior” Bill (Vollmer)

We love our data, yes –siree, hurrah, hurrah
They fill us all with warmth and glee, hurrah, hurrah

Some are skewed and some are not
Normal, chi-square and the lot

And all come out of Senor Bill’s Black Box

Regression is a lot of fun, hurrah, hurrah
Especially with an n of 1, hurrah, hurrah

SPSS it is a blast,
But with Altay R is so fast

And all come out of Senor Bill’s Black Box

Paper writing is a breeze, hurrah, hurrah
Especially in Japanese, hurrah, hurrah

The thoughts must follow logically
In active voice the words must be

And all come out of Senor Bill’s Black Box

Level 4 will put you to the test, hurrah, hurrah
Our students they are MECOR’s best, hurrah, hurrah

We worked all day, we worked all night
But we survived cause we’re so bright

Now Bill’s Black Box is just a shade of gray

MECOR L. America Our Celebration!



MECOR L. America 2010



MECOR L. America 2010— Level 1



MECOR L. America 2010— Level 2



MECOR L. America 2010— Level 3



MECOR L. America 2010— Level 4



MECOR L. America-- Acknowledgements

- The American Thoracic Society is the primary sponsor of MECOR L. America 2010 in Bogotá, Colombia
- Additional support was provided by
 - Asociación Latinoamericana del Tórax (ALAT)
 - In partnership with other professional societies in Latin America, and
 - Latin American Pharmaceutical Companies
- The ATS acknowledges and gratefully thanks Drs. Ivan Solarte and Carlos Torres-Duque, local coordinators of MECOR L. America 2010 and their colleagues at Pontificia Universidad Javeriana

Our sincere thanks to all who believe in the MECOR mission and support this program

Nos vemos el año que viene en Guayaquil!



MEC(OR) *“Improving global lung health through development of local, country and regional lung disease research capacity”*