



# MECOR L. AMERICA 2011



MECOR



# Hola desde Santiago de Guayaquil!





# Our Course Home--

## Universidad de Especialidades Espiritu Santo



# MECOR L. America 2011-- Our Leaders

- **A. Sonia Buist, MD**  
Oregon Health Sciences Univ.  
Portland, Oregon USA  
Director, ATS MECOR Program
- **Ivan Cherrez, MD**  
Guayaquil, Ecuador  
Organizer, MECOR L. America 2011
- **Ana Menezes, MD**  
Universidade Federal de Pelotas  
Pelotas, Brazil  
Director, MECOR L. America



# MECOR L. America 2011 Introductions





# MECOR L. America 2011 Our Students—Level 1



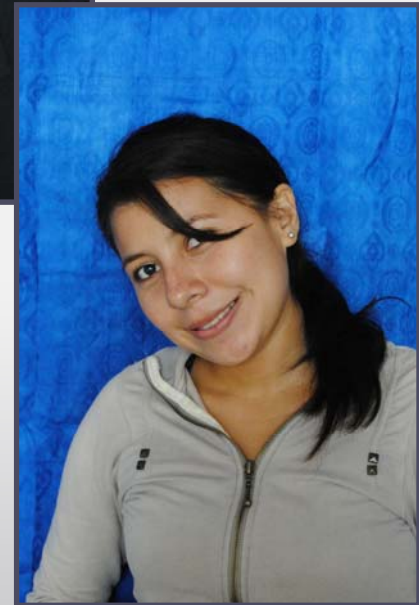
# MECOR L. America 2011

## Our Students—Level 1



# MECOR L. America 2011

## Our Students—Level 1





# MECOR L. America 2011 Our Students--Level 1



# MECOR L. America 2011

## Our Students—Level 1



# MECOR L. America 2011

## Our Students—Level 1





# MECOR L. America 2011

## Our Students—Level 1



# MECOR L. America 2011

## Our Students—Level 1



# MECOR L. America 2011

## Our Students—Level 1





# MECOR L. America 2011

## Our Students—Level 1



# MECOR L. America 2011

## Our Students—Level 1



# MECOR L. America 2011 Our Students—Level 2





# MECOR L. America 2011

## Our Students—Level 2



# MECOR L. America 2011

## Our Students—Level 2



# MECOR L. America 2011

## Our Students—Level 2





# MECOR L. America 2011

## Our Students—Level 3



# MECOR L. America 2011

## Our Students—Level 4



# MECOR L. America 2011 Our Students—Level 4





# MECOR L. America 2011

## Our Students—Level 4



# MECOR L. America 2011 Our Faculty and Staff



# MECOR L. America Hard at Work

Our “conversations” in classrooms & hallways





# MECOR L. America Hard at Work

Our “conversations” in classrooms & hallways



# MECOR L. America Hard at Work Small Groups



# MECOR L. America Hard at Work Small Groups





# MECOR L. America

## What is the Question—Level 1

- What is the prevalence of obstructive sleep apnea among pregnant women with gestational hypertension?
- Is disability prior to hospital discharge a better predictor of quality of life than the APACHE score in ICU survivors?
- What is the prevalence of asthma in students from 6 to 12 years old in the cities of Lima, Brasilia, Sao Paulo and Guayaquil?
- Which is the impact of exposure to Puyehue's volcanic ash in spirometric values among street cleaners Bariloche city?
- What is the prevalence of active TB among prisoners in South America and what is its relation with HIV?

# MECOR L. America

## What is the Question—Level 2

- Does a portable monitoring system type 3 for the home diagnosis of sleep apnea accurately measure the apnea-hypopnea index among obese patients compared to a full-night polysomnogram at the sleep lab ?
- Do adults with asthma and allergic rhinitis have worse quality of life than adults with asthma and no allergic rhinitis? What is the prevalence of allergic rhinitis among adults with asthma?
- Is the change in bronchodilator response measured by spirometry correlated to the change in impulse oscillometry in children with asthma under 6 years of age?
- What is the diagnostic accuracy of RT-PCR in comparison with semi-quantitative tracheal aspirate culture for diagnosis of pulmonary bacterial co-infection in infants mechanically ventilated for RSV bronchiolitis?

# MECOR L. America

## What is the Question—Level 2

- Does Electrical Impedance Tomography (EIT) detect changes in upper airway patency within subjects in different body position and does EIT identify changes in upper airway patency between groups with different Body Mass Index (BMI)?
- What is the adherence level of general practitioners to GINA Guidelines in Guayas, Ecuador?
- Are socio-economic and working characteristics associated to current smoking among workers in a tobacco-free hospital in Cutral Co, Argentina?
- Do clinical, radiologic and laboratory factors accurately predict pulmonary tuberculosis (TB) in acid-fast bacillus smear-negative HIV-infected adult patients?
- What is the prevalence of asthma in students from 6-12 years old in the cities of Lima, Brasilia, Sao Paulo, and Guayaquil?



# MECOR L. America

## What is the Question—Level 2

- Which are the normal spirometry values in healthy children who live in Bogota? (city located at 2640 meters above sea level)
- What is the prevalence of tobacco use, knowledge and attitudes about tobacco use in advanced year health professional students in Guayaquil, Ecuador?
- Does training intervention improve the acceptability of spirometry maneuvers comparing with standard care in patients who had a failed first attempt?
- Are there any differences in prevalence of risk factors for vascular events (Major Adverse Cardiovascular Events (MACE), between population from Cipolletti City and National Survey of risk factors in Argentina?
- Does obstructive airway disease correlate with atherosclerosis?

# MECOR L. America

## What is the Question—Level 3

- What are the risk factors associate with cancer diagnosis in patients with thromboembolic disease?
- What are the risk factors and prevalence for sleep apnea among children with sickle cell anemia?
- What are the risk factors and prevalence for hepatic steatosis in one center in Argentina?
- Prophylaxis of catheter related thrombosis in hospitalized patients over 65 years: a single-blind, randomized, controlled trial comparing two different doses of enoxaparin.

# MECOR L. America

## What is the Question—Level 4

- Does an intensive physiotherapy program improves pulmonary function, muscle strength and exercise capacity among patients undergoing kidney transplantation?
- What are the risk factors for pulmonary tuberculosis in a big Brazilian city?
- Is the laparoscopic surgery affect the distribution of pulmonary and inspiratory muscle activation?
- Is the volume-oriented incentive spirometry superior to flow-oriented incentive spirometry in improving the distribution of pulmonary volumes in thoracoabdominal compartments and inspiratory muscular activity?



# MECOR L. America

## What is the Question—Level 4

- Can the Volumetric High Resolution computed tomography detect bigger lung volumes in people who born and raised at middle altitude?
- Is the wells score accurate for inpatients suspected of pulmonary embolism?
- Which factors are associated with the diagnosis of cancer in patients with thromboembolic disease?
- What is the attitude and knowledge about obstructive sleep apnea in Latin American primary care physicians?

# MECOR L. America

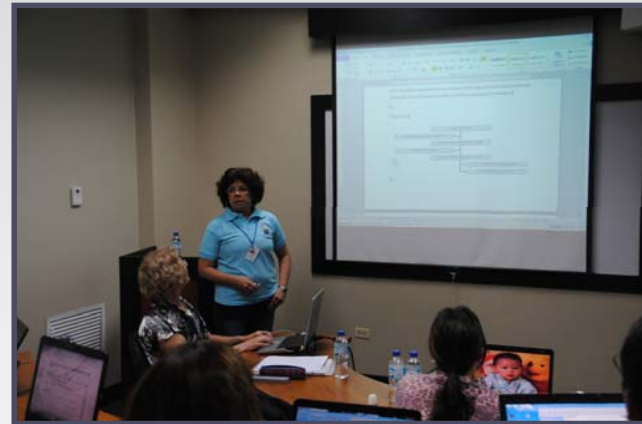
## What is the Question—Level 4

- What are the characteristics of COPD in people exposed to wood smoke and its differences from the tobacco smoke COPD in a population-based study?
- Is there a difference in endothelial dysfunction among patients with idiopathic pulmonary arterial hypertension and Schistosomiasis-associated pulmonary arterial hypertension?
- Does resistive training during hospitalization modify activity during daily life in COPD patients?

# MECOR L. America Course Presentations



# MECOR L. America Course Presentations





# MECOR L. America Our Celebration



**Sonia Buist, MD**

***Honorable Citizen of  
Santiago de Guayaquil***

**In recognition of Dr. Buist's contributions to the research, teaching, and publications on respiratory disease and for her development of the ATS MECOR program that has led to research capacity building in Latin America, Africa, Turkey, India and Vietnam.**

# MECOR L. America Our Celebration—The Faculty

**“MECOR MECOR”**  
(“New York, New York”)



Start spreadin' the news  
We're teaching today  
We are the epi faculty of  
MECOR MECOR

Confounding and bias  
Can get in the way  
We'll show you how to randomize  
MECOR MECOR

I wanna wake up in a world  
Where grants grow on trees  
And find a significant “P”  
That's what I need

This protocol sucks,  
Its sample size is too big  
I'll make a brand new start of it  
Here at MECOR

If I can make it here  
I'll make it anywhere  
It's up to you  
MECOR MECOR

These sample size blues  
Are melting away  
I've learned to cull my database  
In old MECOR

And if I can make it there  
I'm going to make it any where  
Brazil, Argentina, Chile, Columbia, Peru  
And Ecuador!  
MECOR MECOR!

# MECOR L. America The Celebration—Level 1



## *“Fernando”*

*Though we never thought we could lose*

*There is no regret*

*If I had to do MECOR Level 1 again*

*I would my friend, Fernando!*

# MECOR L. America

## Our Celebration—Level 4

**MECOR was a lot of fun!**  
(Old MacDonald's Farm)



And in our class we wrote a paper, yes oh yes it's true  
With an intro here, some methods there,  
Add results, then discuss, all without a lot of fuss  
MECOR was a lot of fun, yes oh yes it's true

We learned a little stats, yes oh yes it's true  
With a t-test here, a chi-squared there,  
Run the stats, get the P, all so very easy  
MECOR was a lot of fun, yes oh yes it's true

Ilka's lectures were a blast, yes oh yes it's true  
She taught us well, we learned a lot  
Methods all, must be in, or its is a mortal sin  
MECOR was a lot of fun, yes oh yes it's true

Suzana taught us how to show all of our results  
A figure here, a table there,  
Make them clear, label well, then they'll look really swell  
MECOR was a lot of fun, yes oh yes it's true

Bill showed us how to know our data, yes oh yes its true  
With frequency here, descriptives there  
Here a mean, there some skew, gotta clean it all anew  
MECOR was a lot of fun, yes oh yes it's true

And now we're almost through the week, yes oh yes it's true  
We worked all day, we worked all night  
Draft it once, draft it twice, till it all looks really nice  
MECOR was a lot of fun, yes oh yes it's true!



# MECOR L. America The Celebration







# MECOR L. America 2011



# MECOR L. America 2011— Level 1





# MECOR L. America 2011— Level 2



# MECOR L. America 2011— Level 3





# MECOR L. America 2011— Level 4



# MECOR L. America-- Acknowledgements

- The American Thoracic Society is the primary sponsor of MECOR L. America 2011 in Guayaquil, Ecuador
- Additional support was provided by
  - Asociación Latinoamericana del Tórax (ALAT)
    - In partnership with other professional societies in Latin America, and
    - Latin American Pharmaceutical Companies
- The ATS acknowledges and gratefully thanks Dr. Ivan Cherez Ojeda, local coordinator of MECOR L. America 2011 and his colleagues at Universidad de Especialidades Espiritu Santo with special thanks to Dr. Rodolfo Farfan

Our sincere thanks to all who believe in the MECOR mission and support the ATS  
MECOR program



# Nos vemos el año que viene en Pelotas!



**MEC(OR)** *“Improving global lung health through development of local, country and regional lung disease research capacity”*