

MECOR Turkey 2011



MECOR



Merhaba Istanbul!



MECOR Turkey 2011

Our Hosts



Arzu Yorgancıoğlu, MD
&
Oya İtil, MD
Turkish Thoracic Society

MECOR Turkey 2011

Our Director

A. Sonia Buist, MD
Oregon Health Sciences University

Director, *ATS MECOR Program*



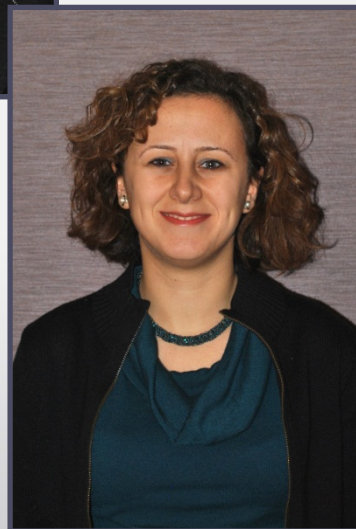
MECOR Turkey 2011 Introductions



MECOR Turkey 2011 Our Students—Level 1



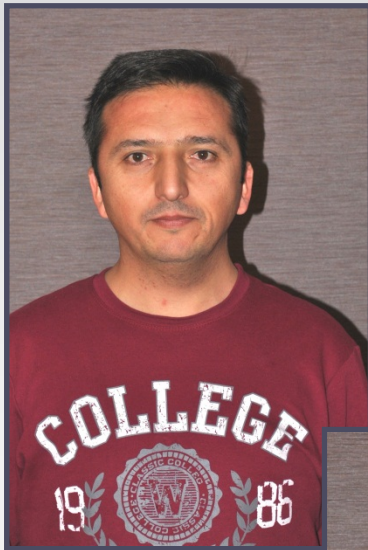
MECOR Turkey 2011 Our Students—Level 1



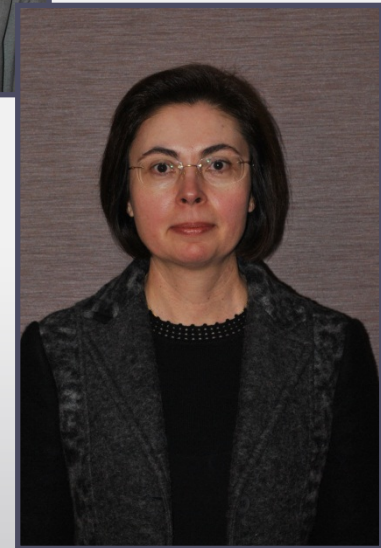
MECOR Turkey 2011 Our Students—Level 1



MECOR Turkey 2011 Our Students—Level 1



MECOR Turkey 2011 Our Students—Level 1



MECOR Turkey 2011 Our Students—Level 1



MECOR Turkey 2011 Our Students—Level 2



MECOR Turkey 2011 Our Students—Level 2



MECOR Turkey 2011 Our Students—Level 2



MECOR Turkey 2011 Our Students—Level 3



MECOR Turkey 2011 Our Students—Level 3



MECOR Turkey 2011 Our Students—Level 3



MECOR Turkey 2011 Our Students—Level 3



MECOR Turkey 2011 Our Faculty



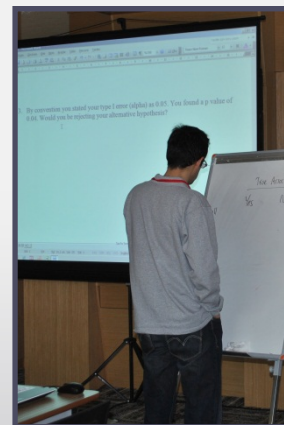
MECOR Turkey Hard at Work

Our “conversations” in classrooms & hallways



MECOR Turkey Hard at Work

Our “conversations” in classrooms & hallways



MECOR Turkey Hard at Work

Small Groups



MECOR Turkey Hard at Work

Small Groups



MECOR Turkey

What is the Question– Level 1

- What is the prevalence and risk factors for smoking among medical students in Turkey?
- Do Turkish pulmonologists and pulmonary residents have the relevant up-to-date knowledge on COPD and adhere to the national COPD guidelines for the management of COPD?
- Does the Turkish Thoracic Society patient group education program improve asthma control in the asthma tertiary clinical setting?
- Are there any factors affecting the treatment outcomes of short course chemotherapy of pulmonary Tuberculosis in Istanbul?

MECOR Turkey

What is the Question– Level 2

- Has the mortality rate of adult cancer patients admitted to the ICU demonstrated difference between 2002–2006 and 2007–2010 time period?
- Is spirometry screening useful for detecting undiagnosed COPD?
- Are pulmonologists, who are current smokers, less likely to provide smoking cessation counseling to their patients compared to non-current smokers?
- Does a chemotherapy protocol which includes bevacizumab decrease pulmonary arterial pressure?
- Is actively supported smoking cessation associated with increased proportion of smoking cessation among adult smokers?

MECOR Turkey

What is the Question– Level 3

- What is the association between interleukin-17 response and tuberculosis status in children?
- Is the ACT asthma control test related with the asthma quality of life questionnaire?
- Does the PCT response change with age?
- What is the effect of positive airway pressure treatment on urine micro album levels?
- What is the comparative mortality in the ICU at one year post discharge between elderly patients and middle age patients admitted to the ICU?

MECOR Turkey

What is the Question– Level 3

- What are the sociodemographic and clinical characteristics of pneumonia cases from an occupational disease hospital in Turkey?
- What is the attitude toward the 2009 smoking ban in Çorum, Turkey among healthcare workers who smoke?
- What is the seasonal relationship of blood lymphocyte apoptosis with bronchial hyperresponsiveness in seasonal allergic rhinitis?
- Copeptin and c-reactive protein, brain natriuretic peptide levels in the course of COPD exacerbation, a descriptive study

MECOR Turkey Our Celebration



MECOR Turkey Our Celebration



MECOR Turkey 2011



Acknowledgements

**This course has been developed and implemented by
the American Thoracic Society (ATS)**

MECOR Turkey 2011 is supported financially and in kind by:

- **American Thoracic Society**
- **Turkish Thoracic Society**

**The American Thoracic Society acknowledges and thanks
Drs. Arzu Yorgancıoğlu and Oya İtil and their colleagues who assisted
in the organization of MECOR Turkey 2011.**

Gelecek yıl görüşmek üzere!



“Improving global lung health through development of local, country and regional lung disease research capacity”